

# H. Algebra II Review KEY

## Part 1 - Linear

1.a.1  $y = \frac{3}{7}x + \frac{5}{14}$

1.a.2  $y = \frac{5}{3}x + \frac{22}{3}$

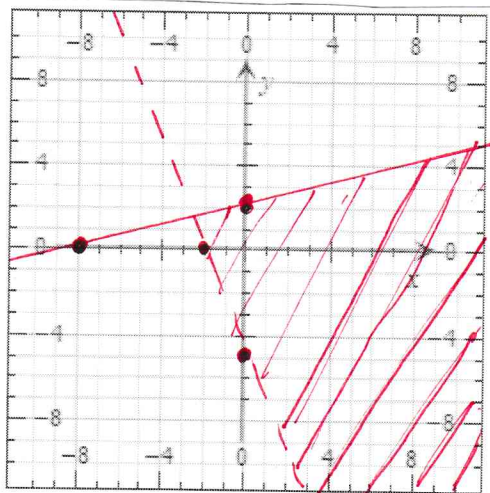
1.a.3  $y = x + 2$

1.b.1  $(-1, 2)$

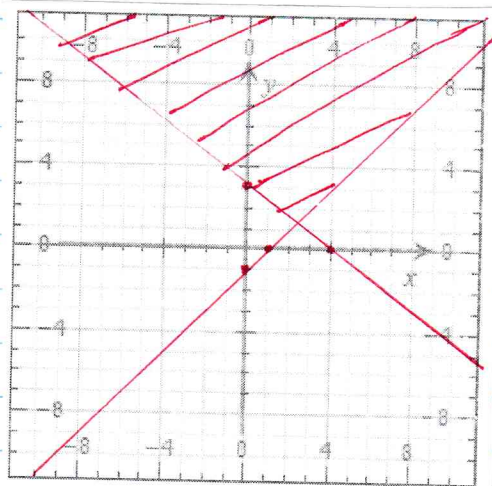
1.b.2  $(-3, -6)$

1.c.1  $(3, 0, -5)$

1.d.1  $-20 < C < 10^\circ$



1.d.2



1.d.3